

## Sprockets 3/8" x 7/32" hardened

for simplex and duplex chain to DIN 8187 - ISO/R 606 (06 B)

### Chain dimension

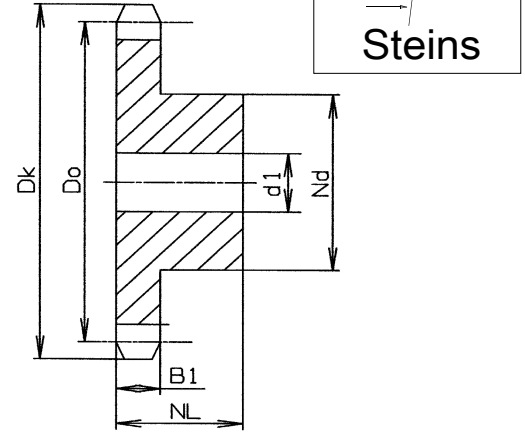
pitch = 9,252 mm  
inner width = 5,72 mm  
Roller-Ø = 6,35 mm

Material: C 45

Hardness: HRC 50 +2

### Sprocket dimension

Tip circle-Ø =  $D_k$  mm  
Pitch circle Ø =  $D_o$  mm  
Tooth width  $B_1 = 5,3$  mm  
Hub length =  $NL$  mm  
Hub-Ø =  $N_d$  mm  
Bore-Ø =  $d_1$  mm



Teeth	Tip-circle-Ø	Pitch-circle-Ø	Simplex sprocket				teeth-	Tip-circle-Ø	Pitch-circle-Ø	Simplex sprocket			
			Nd	d1	NL	kg / pcs				Nd	d1	NL	kg / pcs
13	43,0	39,80	28	10	25	0,13	20	64,3	60,89	46	10	28	0,39
14	46,3	42,80	31	10	25	0,16	21	68,0	63,91	48	12	28	0,42
15	49,3	45,81	34	10	25	0,19	22	71,0	66,93	50	12	28	0,46
16	52,3	48,82	37	10	28	0,24	23	73,5	69,95	52	12	28	0,50
17	55,3	51,83	40	10	28	0,28	24	77,0	72,97	54	12	28	0,54
18	58,3	54,85	43	10	28	0,33	25	80,0	76,00	57	12	28	0,60
19	61,3	57,85	45	10	28	0,36	30	94,7	91,12	60	12	28	0,72

## Sprockets 1/2" x 5/16" hardened

for simplex and duplex chain to DIN 8187 - ISO/R 606 (08 B)

### Chain dimension

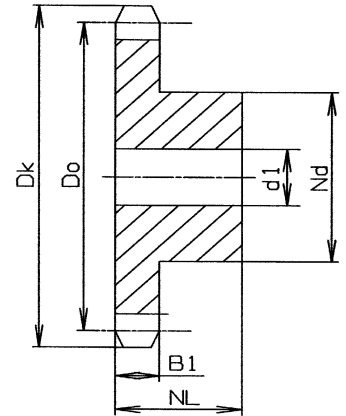
pitch = 12,7 mm  
inner width = 7,75 mm  
Roller-Ø = 8,51 mm

Material: C 45

Hardness: HRC 50 +2

### Sprocket dimension

Tip circle-Ø =  $D_k$  mm  
Pitch circle Ø =  $D_o$  mm  
Tooth width  $B_1 = 7,2$  mm  
Hub length =  $NL$  mm  
Hub-Ø =  $N_d$  mm  
Bore-Ø =  $d_1$  mm



Teeth	Tip-circle-Ø	Pitch-circle-Ø	Simplex sprocket				teeth-	Tip-circle-Ø	Pitch-circle-Ø	Simplex sprocket			
			Nd	d1	NL	kg / pcs				Nd	d1	NL	kg / pcs
12	53,0	49,03	33	10	28	0,21	20	85,8	81,19	64	12	28	0,76
13	57,4	53,06	37	10	28	0,26	21	89,7	85,22	68	14	28	0,85
14	61,8	57,07	41	10	28	0,32	22	93,8	89,24	70	14	28	0,91
15	65,5	61,09	45	10	28	0,38	23	98,2	93,27	70	14	28	0,95
16	69,5	65,10	50	12	28	0,46	24	101,8	97,29	70	14	28	0,98
17	73,6	69,11	52	12	28	0,51	25	105,8	101,33	70	14	28	1,01
18	77,8	73,14	56	12	28	0,59	30	126,1	121,50	80	16	30	1,46
19	81,7	77,16	60	12	28	0,67							

## Sprockets 5/8" x 3/8" hardened

for simplex and duplex chain to DIN 8187 - ISO/R 606 (10 B)

### Chain dimension

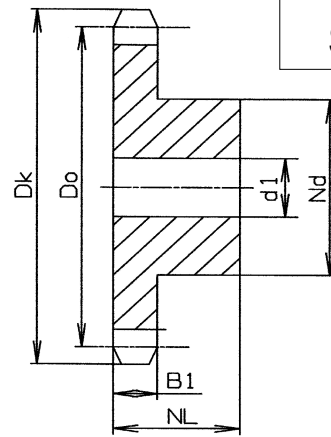
pitch = 15,875 mm  
inner width = 9,65 mm  
Roller-Ø = 10,16 mm

Material: C 45

Hardness: HRC 50 +2

### Sprocket dimension

Tip circle-Ø = Dk mm  
Pitch circle Ø = Do mm  
Tooth width B1 = 9,1 mm  
Hub length = NL mm  
Hub-Ø = Nd mm  
Bore-Ø = d1 mm



Teeth	Tip-circle-Ø	Pitch-circle-Ø	Simplex sprocket				teeth-	Tip-circle-Ø	Pitch-circle-Ø	Simplex sprocket			
			Nd	d1	NL	kg / pcs				Nd	d1	NL	kg / pcs
12	68,0	61,34	42	12	30	0,37	20	108,4	101,49	75	14	30	1,21
13	73,0	66,32	47	12	30	0,46	21	113,4	106,52	75	16	30	1,37
14	78,0	71,34	52	12	30	0,56	22	118,0	111,55	80	16	30	1,41
15	83,0	76,36	57	12	30	0,67	23	123,4	116,58	80	16	30	1,47
16	88,0	81,37	60	14	30	0,76	24	128,3	121,62	80	16	30	1,54
17	93,0	86,39	60	14	30	0,88	25	134,0	126,66	80	16	30	1,60
18	98,3	91,42	70	14	30	1,01	30	158,8	151,87	80	16	30	1,60
19	103,3	96,45	70	14	30	1,15				90	20	35	2,41

## Sprockets 3/4" x 7/16" hardened

for simplex and duplex chain to DIN 8187 - ISO/R 606 (12 B)

### Chain dimension

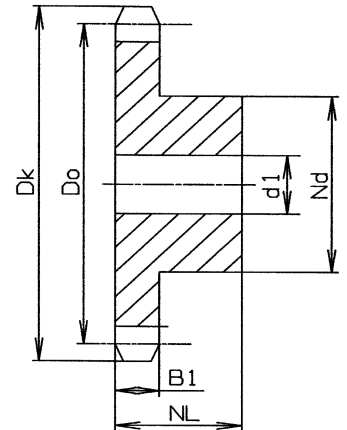
pitch = 19,05 mm  
inner width = 11,68 mm  
Roller-Ø = 12,07 mm

Material: C 45

Hardness: HRC 50 +2

### Sprocket dimension

Tip circle-Ø = Dk mm  
Pitch circle Ø = Do mm  
Tooth width B1 = 10,8 mm  
Tooth width B2 = 30,3 mm  
Hub length = NL mm  
Hub-Ø = Nd mm  
Bore-Ø = d1 mm



Teeth	Tip-circle-Ø	Pitch-circle-Ø	Simplex sprocket				teeth-	Tip-circle-Ø	Pitch-circle-Ø	Simplex sprocket			
			Nd	d1	NL	kg / pcs				Nd	d1	NL	kg / pcs
12	81,5	73,60	52	14	35	0,65	20	129,7	121,78	80	16	35	1,80
13	87,5	79,59	58	14	35	0,80	21	136,0	127,82	90	20	40	2,35
14	93,6	85,61	64	14	35	0,97	22	141,8	133,86	90	20	40	2,46
15	99,8	91,63	70	14	35	1,16	23	149,0	139,90	90	20	40	2,56
16	105,5	97,65	75	16	35	1,34	24	153,9	145,94	90	20	40	2,68
17	111,5	103,67	80	16	35	1,53	25	160,0	152,00	90	20	40	2,80
18	118,0	109,71	80	16	35	1,62	30	190,5	182,25	90	20	40	3,63
19	124,2	115,75	80	16	35	1,70							

## Sprockets 1" x 17,02 mm hardened

for simplex and duplex chain to DIN 8187 - ISO/R 606 (16 B)

### Chain dimension

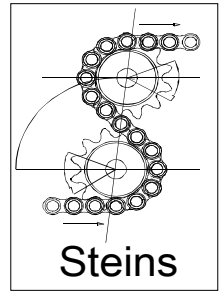
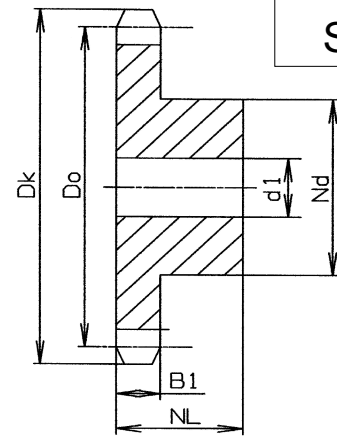
pitch = 25,4 mm  
 inner width = 17,02 mm  
 Roller-Ø = 15,88 mm

Material: C 45

Hardness: HRC 50 +2

### Sprocket dimension

Tip circle-Ø = Dk mm  
 Pitch circle Ø = Do mm  
 Tooth width B1 = 15,8 mm  
 Hub length = NL mm  
 Hub-Ø = Nd mm  
 Bore-Ø = d1 mm



Teeth-	Tip-circle-Ø	Pitch-circle-Ø
12	109,0	98,14
13	117,0	106,12
14	125,0	114,15
15	133,0	122,17
16	141,0	130,20
17	149,0	138,22
18	157,0	146,28
19	165,2	154,33

Simplex Sprocket			
Nd	d1	NL	kg / pcs
69	16	40	1,43
78	16	40	1,77
84	16	40	2,08
92	16	40	2,46
100	20	45	3,14
100	20	45	3,34
100	20	45	3,56
100	20	45	3,78

teeth-	Tip-circle-Ø	Pitch-circle-Ø
20	173,2	162,38
21	181,2	170,43
22	189,3	178,48
23	197,5	186,53
24	205,5	194,59
25	213,5	202,66
30	254,0	243,00

Simplex Sprocket			
Nd	d1	NL	kg / pcs
100	20	45	4,03
110	20	50	5,01
110	20	50	5,28
110	20	50	5,56
110	20	50	5,86
110	20	50	6,16
120	20	50	8,38